



THERMODYNE STEAM TRAP

MODEL HR150A ALLOY STEEL

THERMODYNAMIC STEAM TRAP FOR HIGH PRESSURES

Features

Air-jacketed disc trap for drainage of high pressure steam mains and turbines.

1. Inline replaceable valve module for ease of maintenance and low cost of repair.
2. Lapped disc provides steam-tight seal.
3. Air jacket reduces radiant heat loss to reduce no-load cycling and so extend life.
4. Built-in screen with large surface area for extended trouble-free operation
5. Hardened working surfaces guarantee long service life.



Specifications

Model		HR150A	
Connection		Socket Welded	Butt Welded
Size		DN 15, 20, 25	DN 15, 25
Maximum Operating Pressure (barg)	PMO	150	
Minimum Operating Pressure (barg)		16	
Maximum Operating Temperature (°C)		TMO 550	
Maximum Back Pressure		50% of Inlet Pressure	

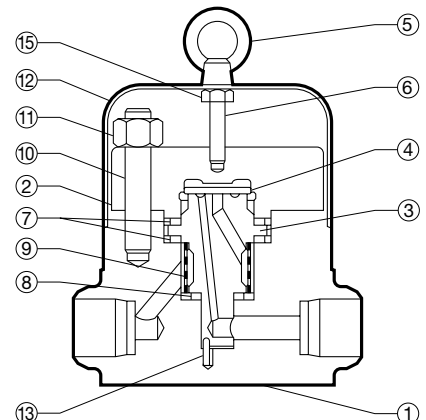
PRESSURE SHELL DESIGN CONDITIONS (**NOT** OPERATING CONDITIONS): Maximum Allowable Pressure (barg) PMA: 150 1 bar = 0.1 MPa
Maximum Allowable Temperature (°C) TMA: 550



To avoid abnormal operation, accidents or serious injury, DO NOT use this product outside of the specification range. Local regulations may restrict the use of this product to below the conditions quoted.

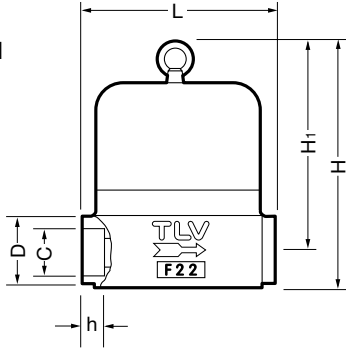
No.	Description	Material	DIN*	ASTM/AISI*
①	Body	Alloy Steel A182F22 Cl. 3	1.7380	—
② ^R	Cover	Stainless Steel SUS420J2	1.4031	AISI420
③ ^R	Module Valve Seat	Stainless Steel SUS440C	1.4125	AISI440C
④ ^R	Disc	Stainless Steel SUS440C	1.4125	AISI440C
⑤	Eye Nut	Carbon Steel SS400	1.0037	A6
⑥	Spacer	Carbon Steel SS400	1.0037	A6
⑦ ^{MR}	Module Gasket	Stainl. Stl. SUS309S+Cb/Graphite	1.4833	AISI309S+Cb
⑧ ^{MR}	Module Gasket	Stainl. Stl. SUS309S+Cb/Graphite	1.4833	AISI309S+Cb
⑨ ^R	Screen outside/inside	Stainless Steel SUS304/430	1.4301/4016	AISI304/430
⑩	Cover Bolt	Alloy Steel SNB16	1.7711	A193 Gr.B16
⑪	Cover Nut	Alloy Steel SNB7	1.7225	A193 Gr.B7
⑫	Cap	Carbon Steel SPCC	1.0330	A109
⑬ ^R	Guide Pin	Stainless Steel SUS304	1.4301	AISI304
⑭	Nameplate**	Stainless Steel SUS304	1.4301	AISI304
⑮	Hexagon Nut	Carbon Steel SS400	1.0037	A6

* Equivalent materials ** Not shown
Replacement kits available: (M) maintenance parts, (R) repair parts



Dimensions

● **HR150A**
Socket Welded

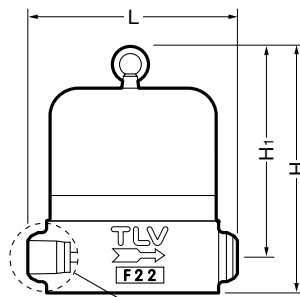


HR150A Socket Welded* (mm)

DN	L	H	H ₁	φD	φC	h	Weight (kg)
15	140	189	160	53.5	21.70	14	12
20					27.05		
25					33.80		

* ASME B16.11, other standards available

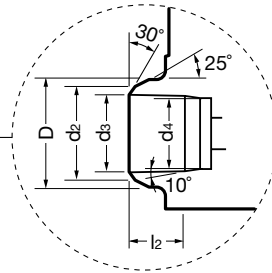
● **HR150A**
Butt Welded



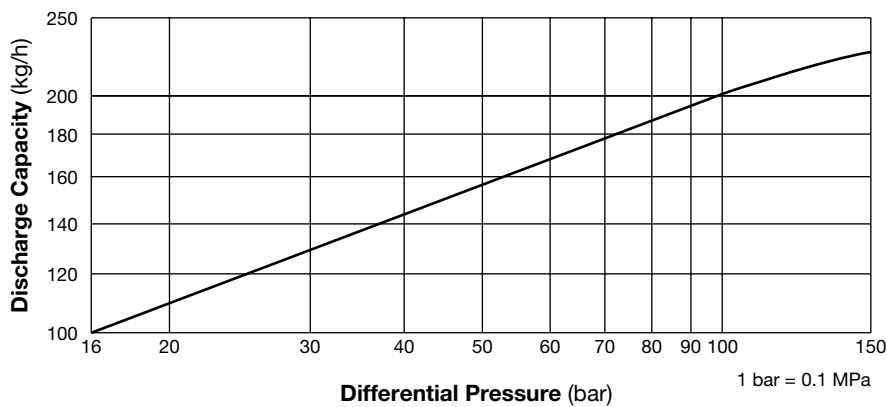
HR150A Butt Welded* (mm)

DN	L	H	H ₁	φD	φd ₂	φd ₃	φd ₄	l ₂	(kg)
15	145	189	160	28	22	17	15	20	12
25				40	34	27	25		

* DIN 3239 Form C (PN 160), other standards available



Discharge Capacity



1. Differential pressure is the difference between the inlet and outlet pressure of the trap.
2. Recommended safety factor: at least 2.

Manufacturer
TLV® CO., LTD.
Kakogawa, Japan
is approved by LRQA Ltd. to ISO 9001/14001

ISO 9001/ISO 14001

